

# ENTRY EXPERIENCE



01 Entry plaza / walkway with benches



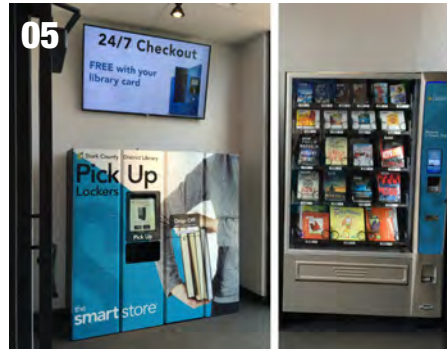
02 Exterior book drop with digital screen advertising library events and new offerings



03 Exterior after hours pick-up lockers



04 See staff when you enter



05 24/7 vestibule with pick-up lockers, book vending, and a digital screen



06 Clear way-finding upon entry - you can see where to go to find the area you're looking for



07 Self-checkout stations



08 Book on easy to browse table style displays



09 Using display shelving and flooring to create a path into the building

# ENTRY EXPERIENCE

Please comment on any **Likes / Dislikes** for the images displayed and note which image your comment relates to. Thank you!

Image #	Likes	Dislikes

**Additional Comments:**

---

---

---

---



# SEATING & CAFE



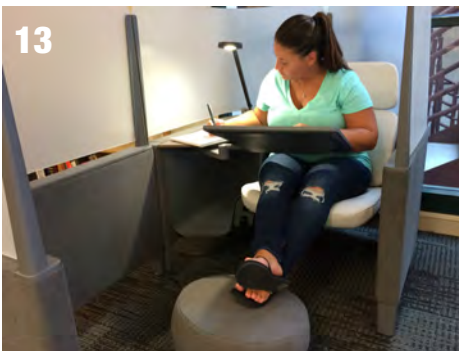
10 Seating along windows



11 Fireplace seating area



12 Alcoves for focused reading / study



13 Using furniture for semi-private seating pods



14 Variety of seating with access to power



15 Comfortable soft seating with powered side tables



16 A variety of seating types and face-out periodicals



17 Quiet reading room



18 Vending machine cafe area with flexible seating and durable finishes



19 Counter height seating area with integrated power outlets

# SEATING & CAFE

Please comment on any **Likes / Dislikes** for the images displayed and note which image your comment relates to. Thank you!

Image #	Likes	Dislikes

**Additional Comments:**

---

---

---

---



# BOOK BROWSING



20 Face out display shelving in a zigzag configuration for browsing from multiple view points



21 Mobile book display units creating a path deeper into the building



22 End panel book display



23 Mobile / flexible nesting tables



24 Neighborhood shelving that highlights nonfiction collections by topic and incorporates seating



25 A research / local history area with table seating integrated with lower shelving for visibility



26 Shelving on wheels for flexibility in space layout



27 Illuminated shelving to highlight collections



28 Large and customizable collection signage that is easy to see and reconfigure



29 Touch screen catalog search stations

# BOOK BROWSING

Please comment on any Likes / Dislikes for the images displayed and note which image your comment relates to. Thank you!

Image #	Likes	Dislikes

Additional Comments:

---

---

---

---



# CHILDREN'S AREA



30 Playful children's area entry



31 Defined but open children's area entry



32 Enclosed children's area entry



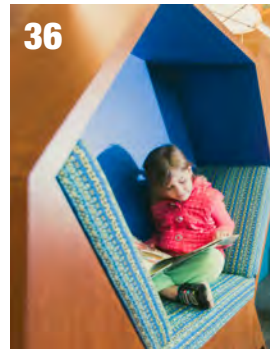
33 Child-size furniture



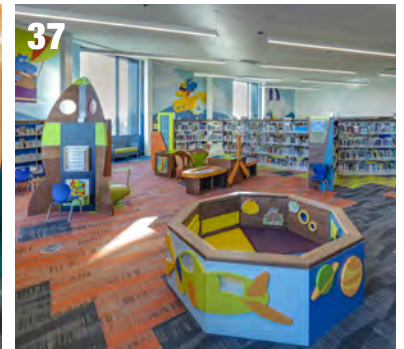
34 Mobile book bins for easy picture book browsing



35 Seating for child and caregiver together



36 Reading nooks



37 Themed interactive hands-on early literacy & motor skill development elements



38 Combination of low-tech and high-tech interactive play elements



39 Everbrite interactive light art piece and children's area with fun colors



40 Children's area for open play and pop up storytime programs



41 Family Activity Room for play, crafts, programs, etc.



42 Youth Program Room with overhead door for flexibility in program size



43 Children's art gallery wall highlighting original book illustrations

# CHILDREN'S AREA

Please comment on any Likes / Dislikes for the images displayed and note which image your comment relates to. Thank you!

Image #	Likes	Dislikes

**Additional Comments:**

---

---

---

---



# TEEN AREA



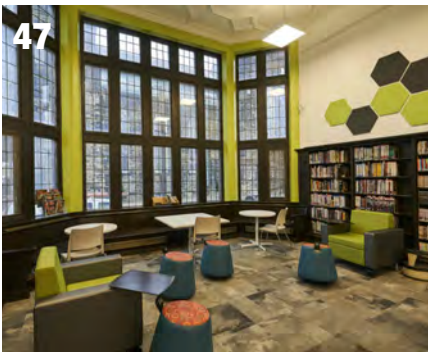
44 Fully enclosed teen area with staff desk



45 Using furniture to define a teen area



46 A teen area for dual use as adult technology training / small group meeting during the school day



47 Flexible seating for easy collaboration



48 Teen area with study rooms, computer stations, and gaming area



49 Teen area with collections, seating options, and collaborative marker board wall



50 Teen area with individual study nooks and large collaborative table space



51 Multi-panel screen for movie nights, gaming events, etc.



52 Access to Virtual Reality equipment



53 Teen area with power drops and options for collaboration

# TEEN AREA

Please comment on any Likes / Dislikes for the images displayed and note which image your comment relates to. Thank you!

Image #	Likes	Dislikes

Additional Comments:

---

---

---

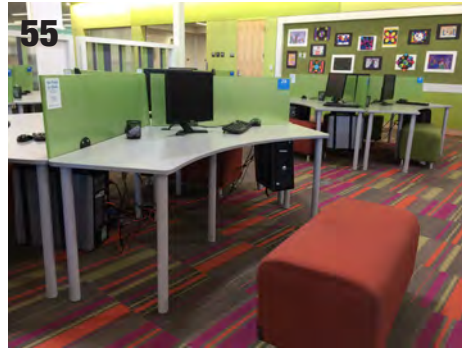
---



# TECHNOLOGY



54 Computer stations along an open counter



55 Computer stations with dividers and seating for two people at a station



56 Computer lab with sliding glass wall for open use when a class is not in session



57 Laptop / iPad / tablet dispenser



58 Music room / audio recording studio



59 Audio and video recording studio with green screen and editing suite



60 Enclosed maker space with 3D printing and crafting equipment



61 Open maker space that can also be used for additional seating



62 Maker space with durable finishes for messy activities



# TECHNOLOGY

Please comment on any Likes / Dislikes for the images displayed and note which image your comment relates to. Thank you!

Image #	Likes	Dislikes

Additional Comments:

---

---

---

---

# MEETING & COLLABORATIVE



63 De-mountable partition walls for study rooms



64 All glass study rooms without doors



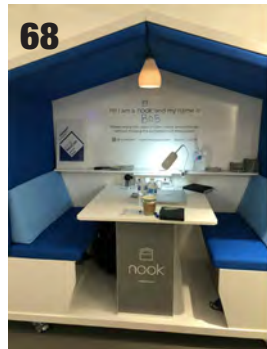
65 Study rooms with digital screen and mobile white board



66 Small group meeting room



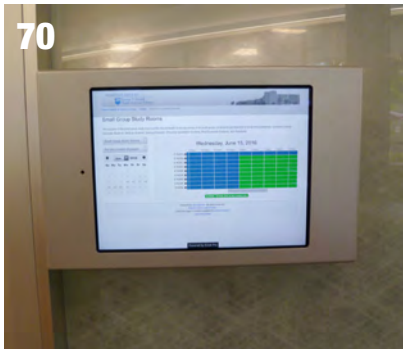
67 Open booths



68 Mobile booth seating



69 Using furniture to create meeting / study spaces



70 Online meeting / study room booking and reservation display screen



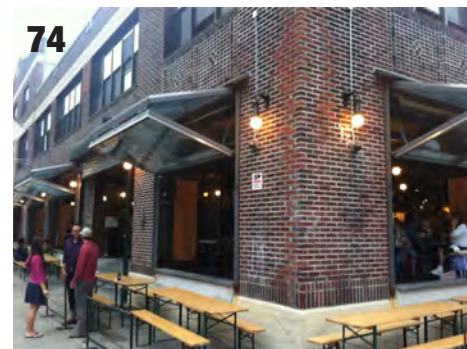
71 Meeting room with a partition wall for sub-dividing the space



72 Meeting room with glass into the library so patrons can see that events are happening inside



73 Nano wall to open meeting room to the lobby for overflow space for larger program attendance



74 Overhead doors that open a meeting room to the outside

# MEETING & COLLABORATIVE

Please comment on any Likes / Dislikes for the images displayed and note which image your comment relates to. Thank you!

Image #	Likes	Dislikes

Additional Comments:

---

---

---

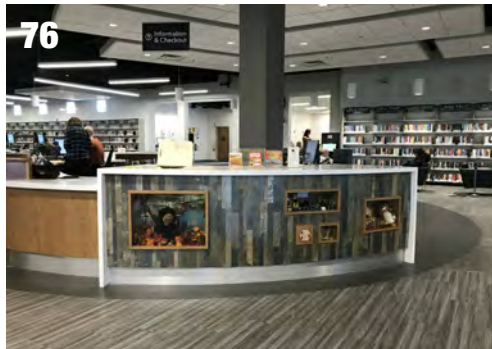
---



# SERVICE POINTS



75 Service point near entry



76 Service point with integrated display



77 Service point where a staff person and patron can view the same screen



78 Double height service point



79 Service point with adjustable height work stations



80 Service point near public computer stations



81 Children's area service point



82 Service point where staff person and patron can sit on the same side to share a screen for guided research



83 Mobile service point to staff additional areas during peak times

# SERVICE POINTS

Please comment on any Likes / Dislikes for the images displayed and note which image your comment relates to. Thank you!

Image #	Likes	Dislikes

**Additional Comments:**

---



---



---



---



# OUTDOOR AREAS



84 Porch style seating area with a glass overhang



85 Reading garden



86 Outdoor reading area that incorporates public art work



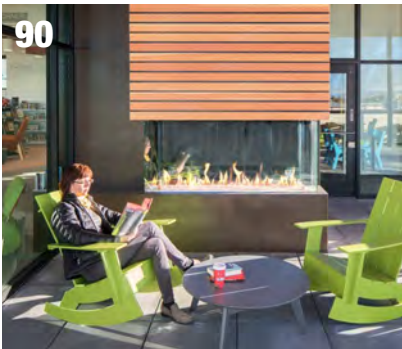
87 Container garden / community garden



88 Patio seating under cover with tables, chairs, and rocking chairs



89 Outdoor seating / gathering for small groups



90 Outdoor fireplace seating



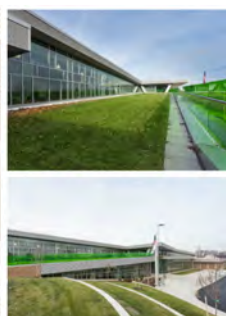
91 Rooftop terrace with a screen for movie nights and youth events



92 Lawn area for large outdoor events



93 Lawn roof for outdoor events



94 Outdoor playground



95 Rooftop space for active programs / fitness classes

Grammy nominee Jack Wagoner led the crowd in a sing-along of his song "When Ballin' Jack," on the Puma Snow Branch's green roof terrace as part of our 2014 Summer Reading kickoff celebration.



# OUTDOOR AREAS

Please comment on any Likes / Dislikes for the images displayed and note which image your comment relates to. Thank you!

Image #	Likes	Dislikes

**Additional Comments:**

---



---



---



---

# ADDITIONAL COMMENTS

Please feel free to note any additional comments that you might have regarding a new Twin Beaches Branch Library or if you feel there is a topic that has not yet been addressed. Thank you for your insight and participation!

---

---

---

---

---

---

---

---

---

---

---

---

---

---

---

---

---

---

---

---

---

---

---